



GBP3 Polyclonal Antibody

Catalog No	YP-Ab-16160
Isotype	IgG
Reactivity	Human;Rat;Mouse;
Applications	WB;IHC;IF;ELISA
Gene Name	GBP3
Protein Name	Guanylate-binding protein 3
Immunogen	The antiserum was produced against synthesized peptide derived from human GBP3. AA range:481-530
Specificity	GBP3 Polyclonal Antibody detects endogenous levels of GBP3 protein.
Formulation	Liquid in PBS containing 50% glycerol, 0.5% BSA and 0.02% sodium azide.
Source	Polyclonal, Rabbit,IgG
Purification	The antibody was affinity-purified from rabbit antiserum by affinity-chromatography using epitope-specific immunogen.
Dilution	WB: 1/500 - 1/2000. IHC: 1/100 - 1/300. ELISA: 1/10000.. IF 1:50-200
Concentration	1 mg/ml
Purity	≥90%
Storage Stability	-20°C/1 year
Synonyms	GBP3; Guanylate-binding protein 3; GTP-binding protein 3; GBP-3; Guanine nucleotide-binding protein 3
Observed Band	64kD
Cell Pathway	Cytoplasm . Cytoplasm, perinuclear region . Golgi apparatus membrane . Heterodimers with GBP1, GBP2 and GBP5 localize in the compartment of the prenylated GBPs: with GBP1 in a vesicle-like compartment, with GBP2, around the nucleus and with GBP-5, at the Golgi apparatus. .
Tissue Specificity	Brain,Prostate,
Function	function: Binds GTP, GDP and GMP.,sequence caution:Contaminating sequence. Potential poly-A sequence.,sequence caution:Unlikely isoform. Aberrant splice sites.,similarity:Belongs to the GBP family.,
Background	This gene encodes a member of the guanylate-binding protein (GBP) family. GBPs specifically bind guanine nucleotides (GMP, GDP, and GTP) and contain two of the three consensus motifs found in typical GTP-binding proteins. The encoded protein interacts with a member of the germinal center kinase family. Multiple transcript variants encoding different isoforms have been found for this gene. [provided by RefSeq, Jan 2016],



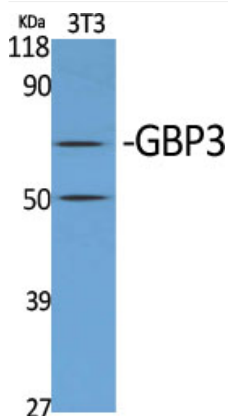
matters needing attention

Avoid repeated freezing and thawing!

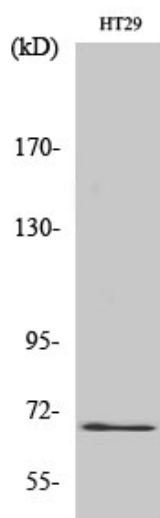
Usage suggestions

This product can be used in immunological reaction related experiments. For more information, please consult technical personnel.

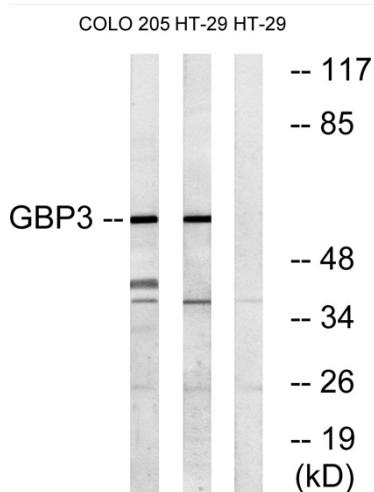
Products Images



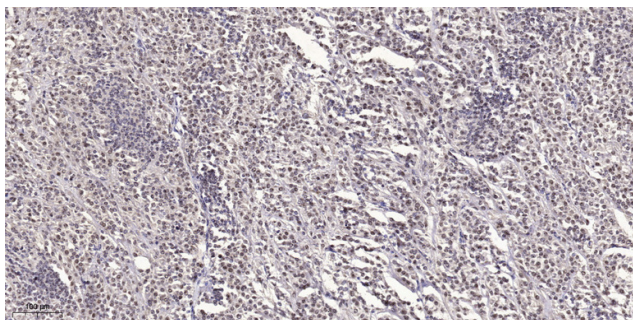
Western Blot analysis of various cells using GBP3 Polyclonal Antibody



Western Blot analysis of COLO205 cells using GBP3 Polyclonal Antibody



Western blot analysis of lysates from HT-29 and COLO cells, using GBP3 Antibody. The lane on the right is blocked with the synthesized peptide.



Immunohistochemical analysis of paraffin-embedded human small intestinal carcinoma tissue. 1, primary Antibody was diluted at 1:200 (4° overnight). 2, Sodium citrate pH 6.0 was used for antigen retrieval (>98° C, 20min). 3, Secondary antibody was diluted at 1:200